

# IDS SMS Duo V2 Training Guide



SOUTH AFRICA'S LEADING MANUFACTURER AND DISTRIBUTOR OF  
ELECTRONIC SECURITY PRODUCTS

## Introduction

The IDS SMS Duo V2 offers powerful, versatile and highly configurable sms reporting and control capabilities, which will keep you informed and in control of your 805 alarm system when away from your premises. The SMS Duo V2 module works with the IDS 805 Alarm Panel, and consists of an X-SMS module and an interface that connects it to the 805 panel. The SMS Duo V2 can also work as a standalone device with two end of line zone inputs and two outputs.

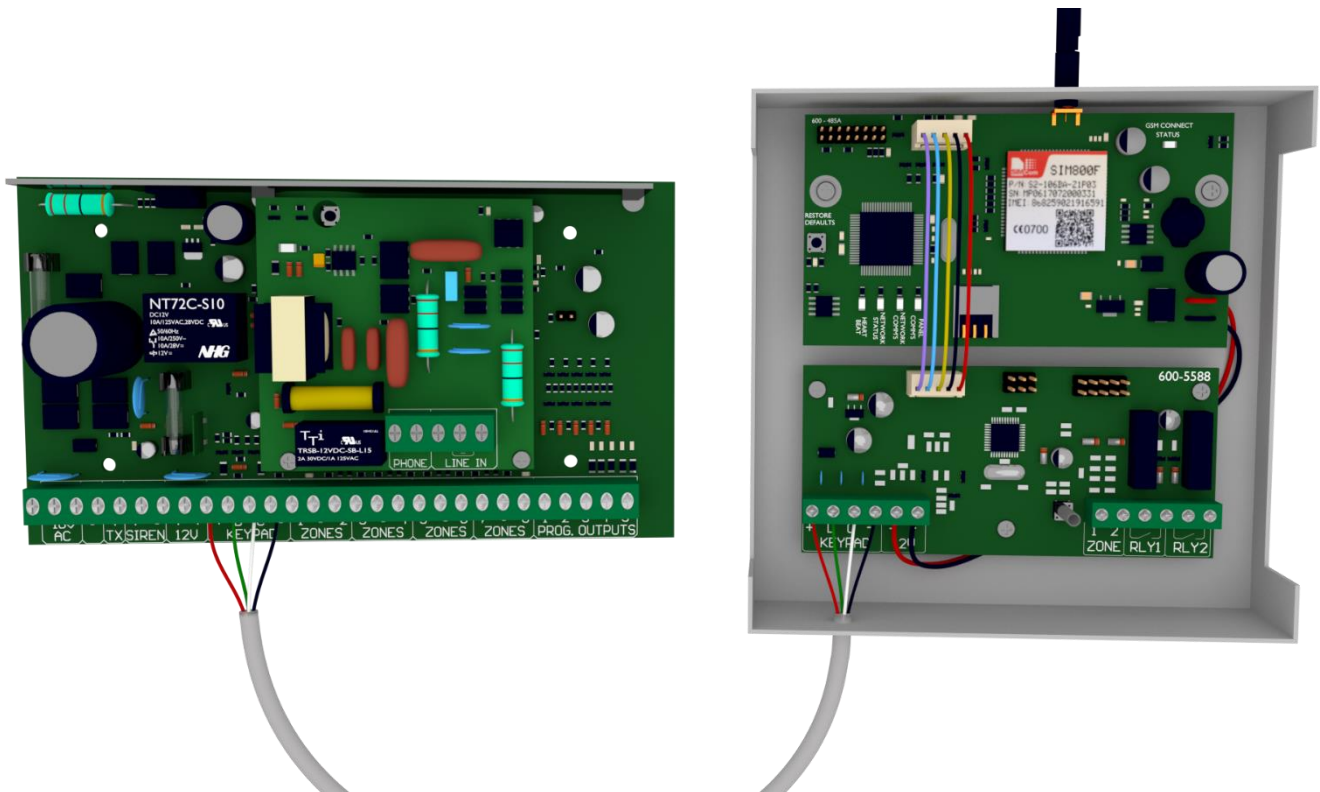
In this training guide we will cover step by step how to install the IDS SMS Duo V2 module, we will explain the concept of programming the unit and go through some of the main commands.



# 1. Installation

## 1.1. SMS Duo V2 Connection to an 805 Panel

The X-SMS module connects to the 805 Interface via a serial cable, the Interface then connects to the 805 panel via the keypad bus as a second keypad. The LED on the interface board, will come on when the module has power and has received a valid clock pulse from the IDS805 alarm panel.



The serial connection between the SMS Duo V2 module and the 805 Alarm Panel is shown in the image above.

## 1.2. Standalone Connection

The SMS Duo V2 in standalone operation only needs a 12V power supply. The zone inputs monitor for an open or closed condition, 3k3 end of line resistors are required to supervise the zones and will be sent as partition 2 zone 9 and 10 when triggered. The outputs on the interface board are relay driven outputs and are controllable via sms.

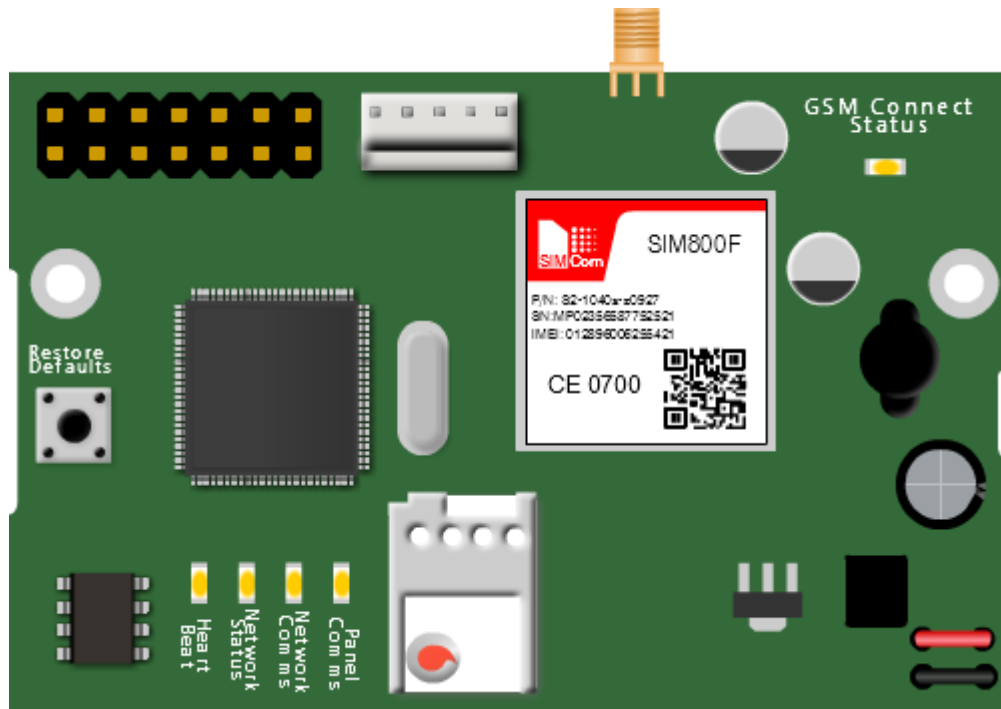
All sms programming for standalone is the same except that the onboard zones are part of partition 2. Remember to turn reporting on for partition 2 if you are using the onboard zones.

### 1.3. Defaulting the X-SMS Module



It is recommended to default the X-SMS module on a new installation. To default the X-SMS module, hold the 'Restore Defaults' button on power up until the 'Heart Beat LED' comes on,  $\pm$  3 seconds.

### 1.4. X-SMS Status LEDs



#### GSM Connect Status

LED flashes once per second if not connected and once every three seconds when connected to the cell network and the signal strength is good enough to communicate.

#### Heart Beat

LED flashes slowly on power up and quickly once the module is running and the power up sequence has completed.

#### Network Status

LED flashes when connected to the cell provider's network and accepted by the service provider.

#### Network Comms

LED on when communicating with the Cell network and off when no communication.

#### Panel Comms

LED on when communicating with the Duo Interface Board and flashes to confirm connection to the interface board.



LEDs are a good way to troubleshoot if any problems arise. For example: If the interface is not connected to the X-SMS v2 Module then only the Heart Beat LED will flash continuously with the Network Status LED flashing occasionally.

## 1.5. Interface Board LED

The interface board LED indicates communication with the IDS 805 panel.

Slow Flash: An IDS805 has not been detected on power up and the unit is in standalone mode.

On: An IDS805 has been detected and is communicating with the SMS DUO V2.

Off: An IDS805 has been detected but is not communicating with the SMS DUO V2.

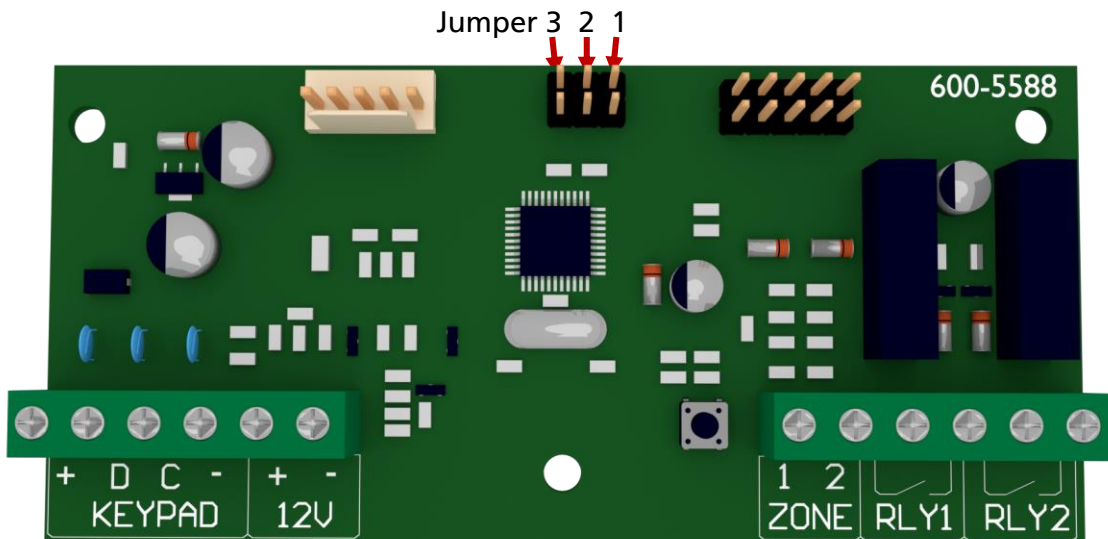
## 1.6. Interface Board Jumpers

The interface board has 3 jumpers to enable/disable certain hardware.

Jumper 1: Configures what device the interface is connected to. **Keep off for SMS Duo V2.**

Jumper 2: Enables zone 1 on the interface board. (*Reports as zone 9*)

Jumper 3: Enables zone 2 on the interface board. (*Reports as zone 10*)



## 2. Basic Programming

In this next section we will discuss the basic programming needed to get started with the SMS Duo V2.

### 2.1. Command structure

All commands follow the same command structure to make programming easy to remember. The command structure goes as follows:

[CODE] *space* [COMMAND] *space* [EXTENDED COMMAND] *space* [DATA]

Where:

**Code** – A valid alarm user code stored in the 805 Alarm Panel.

**Command** – The function that you are wanting to access in the 805 Alarm Panel.

**Extended Command** – Supplementary information the command requires. (Not always used)

**Data** – The value/setting required of the command/extended command.



**The cell networks limit the number of characters to 160 per SMS. The SMS Duo V2 doesn't store any user codes, it just sends them to the 805 Alarm Panel. Make sure the code you use has the appropriate permissions in the 805 Alarm Panel.**

### 2.2. Adding Phone Numbers

In the default state any cell phone can be used to enter the first “Master Phone Number”, you can only add another phone number to the SMS Duo V2 using a “Master Phone Number”.

There are types of categories a phone number can fall under:

#### Master Phone Number

Master phone numbers have the highest level of access to the SMS Module, they are allowed access to all configuration data.

#### Arming phone Numbers

Arming phone numbers have permissions for all panel functions, arm/disarm, panel status, bypass zone, PGM control and receive reports.

#### Reporting Phone Numbers

Reporting phone numbers are only permitted to receive reports from the SMS module, and to temporarily turn off reporting to that number.

To add a Master Phone Number you will use the following information:

**Code** – 1234 (a user code)

**Command** – Add

**Extended Command** – Master (category the number must be under)

**Data** – 074 049 2481 (the number to be made master)

The SMS should look like this:

**1234 add master 0740492481**

You can also name the cell number when adding it to the SMS Duo V2.

The SMS should look like this:

**1234 add master 0740492481:Sid**

All phone number commands:

Action	Code	Command	Ext. Command	Data
Add phone number as a Master number	1234	Add	Master	074 049 2481
Add phone number as an Arm number	1234	Add	Arming	073 917 0759
Add phone number as a Reporting number	1234	Add	Reporting	071 348 9467
Add and name phone number as a Master	1234	Add	Master	074 049 2481:Sid
Deleting a phone number	1234	Delete		074 049 2481

## 2.3. Reporting

Each phone number can turn reporting off, as well as choose how they want to receive reporting messages.

**On/Off** – Enables/Disables reporting to the phone.

**Global** – All enabled global events. Eg. System Trouble.

**P1** – Events that are alarm based. Eg. Arm/Disarm.

**P2** – Reports SMS Duo v2 onboard zones 9 & 10.

**Type** – Enables the type of reporting that the phone number will receive.

There are three types to choose from:

**Raw** – A contact ID string is sent to the phone.

**Full** – All enabled events will be sent to the phone in English.

**Reduced** - Only the following will be reported: Arm/Disarm, Zone violations, Panics, System Troubles. (This is the default)

**Minimal** - Only the following will be reported: Zone violations, Panics, System Troubles.

To turn on reporting for partition 1 and global you will use the following information:

**Code** – 1234 (a user code)

**Command** – Report

**Extended Command** – On P1, global

**Data** – 074 049 2481 (the number or cell name to receive the reporting SMSes)

The SMS should look like this:

**1234 report on p1,global 0740492481**

To change reporting to full you will use the following information:

**Code** – 1234 (a user code)

**Command** – Report

**Extended Command** – Type

**Data** – Full Sid

The SMS should look like this:  
**1234 report type full 074 049 2481**

All reporting commands:

Action	Code	Command	Ext. Command	Data
Turn on reporting for partition events	1234	Report	On P1,P2	074 049 2481
Turn off reporting for global events	1234	Report	Off Global	073 917 0759
Turn on reporting for partition and global events	1234	Report	On P1,P2,Global	071 348 9467
Turn on full reporting	1234	Report	Type	Full 074 049 2481
Turn on reduced reporting	1234	Report	Type	Reduced Sid
Turn on minimal reporting	1234	Report	Type	Minimal John
Turn on raw data reporting	1234	Report	Type	Raw 074 049 2481



Only a “Master Phone Number” can allocate partitions to a phone number.

## 2.4. SMS Threshold

By default there is a threshold of 20 SMSes per day to a single phone number. You can increase or decrease this threshold by sending a threshold command. The threshold is reset every day at midnight based on the SMS Duo V2 time.

To increase the threshold to 50 SMSes you will use the following information:

**Code** – 1234 (a valid user code)

**Command** – Report

**Extended Command** – Threshold

**Data** – 50 (Number of SMSes) 073 917 0759 (Number or cell name to adjust threshold)

The SMS should look like this:

**1234 report threshold 50 0739170759**

To decrease the threshold to 14 smses you will use the following information:

**Code** – 1234 (a valid user code)

**Command** – Report

**Extended Command** – Threshold

**Data** – 14 (Number of SMSes) Sid (Number or cell name to adjust threshold)

The SMS should look like this:

**1234 report threshold 14 Sid**

All threshold commands:

Action	Code	Command	Ext. Command	Data
Increase the reporting threshold to 50 SMSes	1234	Report	Threshold	50 073 917 0759
Decrease the reporting threshold to 14 SMSes	1234	Report	Threshold	14 Sid

## 2.5. Arm/Disarm

Master and Arming phone numbers are able to arm or disarm the 805 Alarm Panel. Arming the panel requires a valid user code for the partition you want to arm/disarm.

To away arm partition 1 you will use the following information:

**Code** – 1234 (a valid user code in partition 1)

**Command** – Arm

**Extended Command** – *\*Not needed*

**Data** – P1 (Partition number or name)

The SMS should look like this:

**1234 arm p1**

To stay arm partition 1 you will use the following information:

**Code** – 1234 (a valid user code in partition 1)

**Command** – Arm

**Extended Command** – S2

**Data** – Flat (Partition number or name)

The SMS should look like this:

**1234 arm s2 flat**

All arm/disarm commands:

Action	Code	Command	Ext. Comm	Data
Away arm all partitions	1234	Arm		All
Away arm P1 & P2	1234	Arm		P1,P2
Stay arm 'house'	1234	Arm	S1	house
Stay arm P1	1234	Arm	S2	P1
Disarm all partitions	1234	Disarm		All
Disarm beams	1234	Disarm		beams
Disarm P1 & P2	1234	Disarm		P1,P2

**\*Remember** the SMS Duo v2 onboard zones are in partition 2 and needs to be armed to be violated. Except when using the Duo in standalone mode zones 9 & 10 are 24 hour zones and don't need to be armed.



## 2.6. Bypass/Unbypass

When needed you are able to send a command to bypass or unbypass a specific zone/s. You must specify which zones to bypass in the data field.

To bypass zone 3 you will use the following information:

**Code** – 1234 (a valid user code)

**Command** – Bypass

**Extended Command** – *\* Not needed*

**Data** – 3 (Zone number or name)

The SMS should look like this:

**1234 bypass 3**

To unbypass zones 4 and 8 you will use the following information:

**Code** – 1234 (a valid user code)

**Command** – Unbypass

**Extended Command** – *\* Not needed*

**Data** – 4,8 (Zone numbers or names)

The SMS should look like this:

**1234 unbypass 4,8**

All bypass/unbypass commands:

Action	Code	Command	Ext. Comm	Data
Bypass zone 1	1234	Bypass		1
Bypass zone 3,4,8	1234	Bypass		3,4,8
Bypass named zone "Passage"	1234	Bypass		Passage
Bypass named zone "Lounge" & "Kitchen"	1234	Bypass		Lounge, Kitchen
Unbypass Zone 5	1234	Unbypass		5
Unbypass "Kitchen"	1234	Unbypass		Kitchen

## 2.7. Panel Status

Using the SMS Duo V2 you are able to check the status of various parts of the panel, such as Arm Status, Zone Status, Bypass Status, and PGM Status.

To check the arm status of partition 1 you will use the following information:

**Code** – 1234 (a valid user code in partition 1)

**Command** – Arm

**Extended Command** – Status

**Data** – P1 (Partition number or name)

The SMS should look like this:

**1234 arm status p1**

The SMS Duo V2 will reply as follows if the partition is disarmed and there are no alarms:

**"IDS SMS. P1 disarmed.**

**P1 alarm status: No alarm"**

To check the zone status of partition 3 you will use the following information:

**Code** – 1234 (a valid user code in partition 1)

**Command** – Zone

**Extended Command** – Status

**Data** – P1 (Partition number or name)

The SMS should look like this:

**1234 zone status p1**

The SMS Duo V2 will reply as follows if zone 3 is bypassed and zone 6 is violated:

**“IDS SMS. P1 disarmed.**

**Z03: bypassed.**

**Z06: violated.”**

To check the bypass status of zone 1 you will use the following information:

**Code** – 1234 (a valid user code in partition 1)

**Command** – Bypass

**Extended Command** – Status

**Data** – 1 (Zone number)

The SMS should look like this:

**1234 bypass status 1**

To check the PGM status of PGM 2 you will use the following information:

**Code** – 1234 (a valid user code in partition 1)

**Command** – PGM

**Extended Command** – Status

**Data** – 2 (PGM number)

The SMS should look like this:

**1234 pgm status 4**

All status commands:

Action	Code	Command	Ext. Comm	Data
Retrieve the status of all partitions	1234	Arm	Status	All
Retrieve the status of P1	1234	Arm	Status	P1
Retrieve the status of P1 & P2	1234	Arm	Status	P1,P2
Retrieve the status of zones in partition 1	1234	Zone	Status	P1
Retrieve the status of zones in partition 1 & 3	1234	Zone	Status	P1,P3
Get PGM 8's status	1234	PGM	Status	8
Get PGM Gate's status	1234	PGM	Status	Gate
Retrieve bypass status of zone 1	1234	Bypass	Status	1
Retrieve status of "Lounge"	1234	Bypass	Status	Lounge

**\*Remember you can only operate PGM 1 & 2 on the SMS Duo v2 Module. You cannot operate the 805 PGMs.**

## 2.8. Naming

With the SMS Duo V2 you are able to name users, codes, sites, partitions, PGMs, and zones to better your reporting and to make sending commands easier.

To name partition 1 you will use the following information:

**Code** – 1234 (a valid user code in partition 1)

**Command** – partition

**Extended Command** – name

**Data** –1:House (Partition number:Name)

The SMS should look like this:

**1234 partition name 1:House**

To name zones 2 & 3 you will use the following information:

**Code** – 1234 (a valid user code in partition 1)

**Command** – zone

**Extended Command** – name

**Data** –2:kitchen,3:dining (Zone number:Name)

The SMS should look like this:

**1234 zone name 2:kitchen,3:dining**

To name a cellphone user you will use the following information:

**Code** – 1234 (a valid user code in partition 1)

**Command** – cellnumber

**Extended Command** – name

**Data** –0740492481:Sid (Cell Number:Name)

The SMS should look like this:

**1234 cellnumber name 0740492481:Sid**

\*You can also name a cellnumber when adding it by using the following command:

**1234 add master 0740492481:Sid**

To name a user code you will use the following information:

**Code** – 1234 (a valid user code in partition 1)

**Command** – usercode

**Extended Command** – name

**Data** –1:Sid (User Code Slot:Name)

The SMS should look like this:

**1234 usercode name 1:Sid**

\*The usercode name is only used for reporting purposes. You cannot arm/disarm a panel using the name.

All naming commands:

Action	Code	Command	Ext. Comm	Data
Name a Site	1234	Site	Name	Office
Name a Partition	1234	Partition	Name	2:Beams
Name a Zone	1234	Zone	Name	2:kitchen,3:dining
Name a Cell Number	1234	Cellnumber	Name	0740492481:Sid
Name a PGM	1234	PGM	Name	5:Lights

Note: Names are all case sensitive.

## 2.9. Missed Call Command

The missed call feature allows you to set a single command on the SMS Duo V2 so that when you miss call the SMS Duo V2 it will perform that command.

To set up this feature you must first set the command on the SMS Duo V2 and then enable it on any numbers that you want to have access to this feature.

To set the missed call command to arm partition 1 you will use the following information:

**Code** – 1234 (a valid user code)

**Command** – Missedcall

**Extended Command** – Set

**Data** – 1234 arm p1 (Command string)

The SMS should look like this:

**1234 missedcall set 1234 arm p1**

To enable 071 348 9467 for the missed call function you will use the following information:

**Code** – 1234 (a valid user code)

**Command** – missedcall

**Extended Command** – Enable

**Data** – 0713489467 (Cell Number/Name)

The SMS should look like this:

**1234 missedcall enable 0713489467**

All missed call commands:

Action	Code	Command	Ext. Comm	Data
Set missed call command to arm p1	1234	Missedcall	Set	1234 arm p1
Enable Sid to use missed call function	1234	Missedcall	Enable	Sid
Disable missed call on 0713489467	1234	Missedcall	Disable	0713489467

## 2.10. List Numbers

You can list all numbers programmed on the SMS Duo V2 and see their permissions.

To list all number you will use the following information:

**Code** – 1234 (a valid user code)

**Command** – List

**Extended Command** – Numbers

**Data** – *\*Not Needed*

The SMS should look like this:

**1234 list numbers**

All list numbers commands:

Action	Code	Command	Ext. Comm	Data
To list all numbers	1234	List	Numbers	

## 2.11. Hints

The SMS Duo V2 will send you a hint based on the command you send it. These hints are to help you know what other related commands you can send. By default hints is turned on for each user.

To enable hints you will use the following information:

**Code** – 1234 (a valid user code)

**Command** – Hint

**Extended Command** – On

**Data** – 0713489467 (Cell Number)

The SMS should look like this:

**1234 hint on 0713489467**

To disable hints you will use the following information:

**Code** – 1234 (a valid user code)

**Command** – Hint

**Extended Command** – Off

**Data** – 0713489467 (Cell Number)

The SMS should look like this:

**1234 hint off 0713489467**

All hint commands:

Action	Code	Command	Ext. Comm	Data
Enable hints for Sid	1234	Hints	On	Sid
Disable hints for 0713489467	1234	Hints	Off	0713489467

# Command Table

Action	Code	Command	Ext. Comm	Data
<b>Phone Numbers</b>				
Add phone number as a Master number	1234	Add	Master	074 049 2481
Add phone number as an Arm number	1234	Add	Arming	073 917 0759
Add phone number as a Reporting number	1234	Add	Reporting	071 348 9467
Deleting a phone number	1234	Delete		074 049 2481
<b>Reporting</b>				
Turn on reporting for partition events	1234	Report	On P1,P2	074 049 2481
Turn off reporting for global events	1234	Report	Off Global	073 917 0759
Turn on reporting for partition and global events	1234	Report	On P1,P2,Global	071 348 9467
Turn on full reporting	1234	Report	Type	Full 074 049 2481
Turn on reduced reporting	1234	Report	Type	Reduced 073 917 0759
Turn on minimal reporting	1234	Report	Type	Minimal 073 917 0759
Turn on raw data reporting	1234	Report	Type	Raw 071 348 9467
Increase the reporting threshold to 50 SMSes	1234	Report	Threshold	50 074 049 2481
<b>Arm/Disarm</b>				
Away arm all partitions	1234	Arm		All
Away arm P1 & P2	1234	Arm		P1,P2
Stay arm P1	1234	Arm	S1	P1
Disarm all partitions	1234	Disarm		All
Disarm P2	1234	Disarm		P2
Disarm P1 & P2	1234	Disarm		P1,P2
<b>Setting Time</b>				
Set the SMS Duo v2 to retrieve the time once a week	1234	Add	Time	061 458 2504
<b>Naming</b>				
Assigning a site name	1234	Site	Name	Home
Name partition 1 "Main House"	1234	Partition	Name	1:Main House
Name zone 2 "Lounge" & zone 5 "Patio"	1234	Zone	Name	2:Lounge, 5:Patio
Name cell 0614582504 "Sid"	1234	Cellnumber	Name	0614582504:Sid
Name PGM 2 Lights	1234	PGM	Name	2:Lights
Delete a name from a number	1234	Delete	Name	Sid
<b>Bypass/Unbypass</b>				
Bypass zone 1	1234	Bypass		1
Bypass zone 3,4,8	1234	Bypass		3,4,8
Bypass named zone "Lounge" & "Kitchen"	1234	Bypass		Lounge, Kitchen
Unbypass Zone 5	1234	Unbypass		5
Unbypass "Kitchen"	1234	Unbypass		Kitchen

Action	Code	Command	Ext. Comm	Data
<b>Burglary/Restore Reporting Description</b>				
Make burglary description open	1234	Burglary	Name	6:Open
Make restore description close	1234	Restore	Name	6:Close
<b>Missed Call Function</b>				
Set the missed call command to '1234 pgm pulseh 1'	1234	Missedcall	Set	'1234 pgm pulseh 1'
Enable missed call function for 0740492481	1234	Missedcall	Enable	0740492481
Disable missed call function for 0740492481	1234	Missedcall	Disable	0740492481
<b>Turn PGM's On/Off</b>				
Turn PGM 1 on	1234	PGM	On	1
Turn PGM 1 & 2 off	1234	PGM	Off	1,2
Pulse PGM 2 Low	1234	PGM	PulseL	2
Pulse PGM 2 High	1234	PGM	PulseH	2
<b>Panel Status</b>				
Retrieve the status of all partitions	1234	Arm	Status	All
Retrieve the status of P1	1234	Arm	Status	P1
Retrieve the status of P1 & P2	1234	Arm	Status	P1,P2
Retrieve the status of zones in partition 1	1234	Zone	Status	P1
Retrieve the status of zones in partition 1 & 2	1234	Zone	Status	P1,P2
Get PGM 2's status	1234	PGM	Status	2
Get PGM Gate's status	1234	PGM	Status	Gate
Retrieve bypass status of zone 1	1234	Bypass	Status	1
Retrieve status of "Lounge"	1234	Bypass	Status	Lounge
<b>Lockout Phone Number</b>				
Temporarily disable a phone number	1234	Lockout	On	074 049 2481
Enable a phone number after being disabled	1234	Lockout	Off	074 049 2481
<b>Manage Airtime</b>				
Save balance string in the SMS module	1234	Airtime	Command	Enter the string supplied
Query airtime balance	1234	Airtime	Balance	
Add airtime	1234	Airtime		Network supplied string
<b>SMS Hints</b>				
Turn SMS hints On	1234	Hint	On	074 049 2481
Turn SMS hints Off	1234	Hint	Off	074 049 2481
<b>List Number</b>				
List all numbers on the XSMS	1234	List	Numbers	
<b>Help</b>				
List commands	1234	Help		
List extended commands for arm	1234	Help	Arm	
List ext commands for disarm	1234	Help	Disarm	
List ext commands for status	1234	Help	Status	P1
List ext commands for naming	1234	Help	Name	
List ext commands for bypassing	1234	Help	Bypass	

Action	Code	Command	Ext. Comm	Data
List ext commands for unbybassing	1234	Help	Unbypass	
List ext commands for airtime	1234	Help	Airtime	
List ext commands for lockout	1234	Help	Lockout	
List ext commands for PGMs	1234	Help	PGM	
List ext commands for zones	1234	Help	Zone	
List ext commands for reporting	1234	Help	Report	
List ext commands for adding a user	1234	Help	Add User	
List ext commands for removing a user	1234	Help	Remove User	