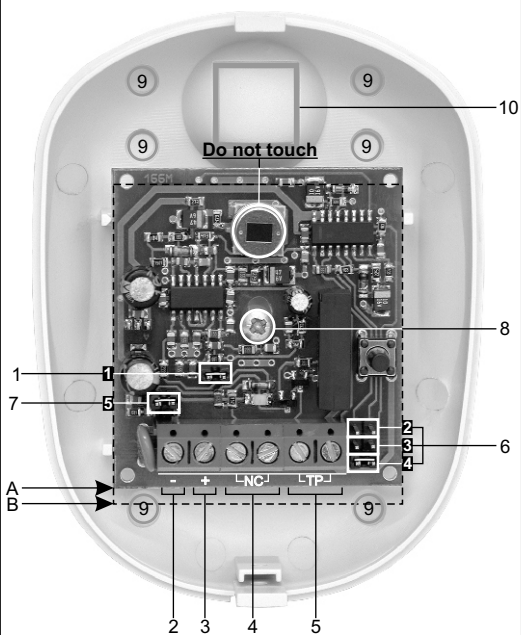


Lifeguard II



Connection Diagram



Description

1 Range Adjustment Setup

Range 6m	Jumper ON	PCB position A
Range 12m	Jumper OFF	PCB position B

- 2 DC Supply GND
- 3 DC Supply 12V (8 - 18V)
- 4 Output N/C (open on alarm)
- 5 Tamper N/C (open on tamper)
- 6 Pulse Count Setting Jumper

Position 2	2 Pulse Count
Position 3	3 Pulse Count
Position 4	4 Pulse Count

7 LED Setting Jumper

ON	LED on
OFF	LED off

- 8 Locking screw
- 9 Cable entry points
- 10 Tamper switch

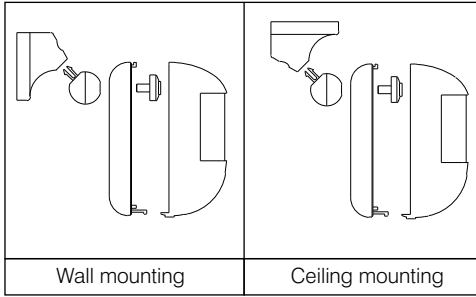
Note: **1** to **5**: Jumper positions

Specification

Operating Voltage	8-18Vdc
Current	15 ± 2mA
Alarm Output	Normally closed
Alarm Period	2 ± 0.5 seconds
Tamper Output	Normally closed
Temperature Range	-10°C to +55°C 14°F to 130°F
Walk Test	Red LED
Pulse Count	1 to 4
Dimensions (HxWxD)	95 x 70 x 45mm without swivel
Optimum Mounting Height	2.1m
Viewing Angle	108°
Detection Range	up to 12m
Initial "Warm up" period	±45 seconds
Accessories	Swivel Swivel base



Installation & Wiring



Wall mounting

Ceiling mounting

Without the Bracket

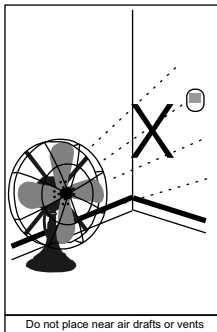
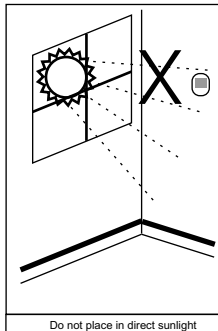
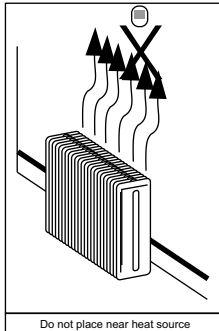
- * Remove the desired knockouts provided in the Life-Guard base plate for the mounting screws and cable entry.
- * Attach the base plate securely to the wall or corner. For optimum results ensure that the unit is mounted no higher than 2.1m above floor level.
- * Complete the wiring as per the Connection Diagram.
- * Do a thorough Walk Test after power up.

Installation & Wiring

Mounting with the Bracket

- * The same bracket is used to achieve both wall and ceiling mounting.
- * Remove front lens cover and carefully remove the PCB from its mounting on the base plate.
- * Punch out the rectangular knockout from the ball joint on the Life-Guard base plate and then attach the base plate to the bracket using the 2cm lock screw and locking disc.
- * Carefully remove a cable entry point knockout at the top of the base plate and replace the PCB in its mounting on the base plate.
- * Feed the cable through the entry point provided on the bracket, through the base plate entry point and complete the wiring as per the Connection Diagram.
- * Do a thorough Walk Test after power up.

Installation Hints



Coverage Pattern

